

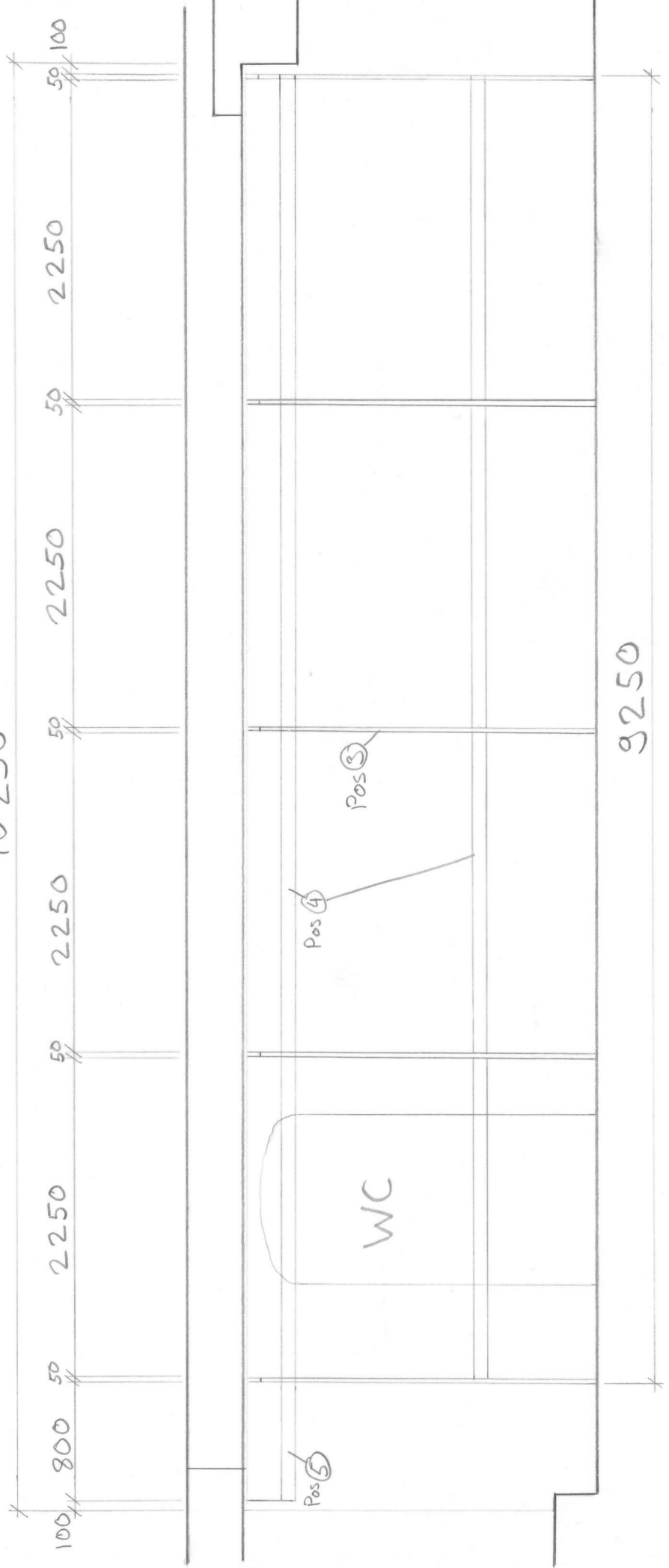
# Shelter Deir Maryam

ARI

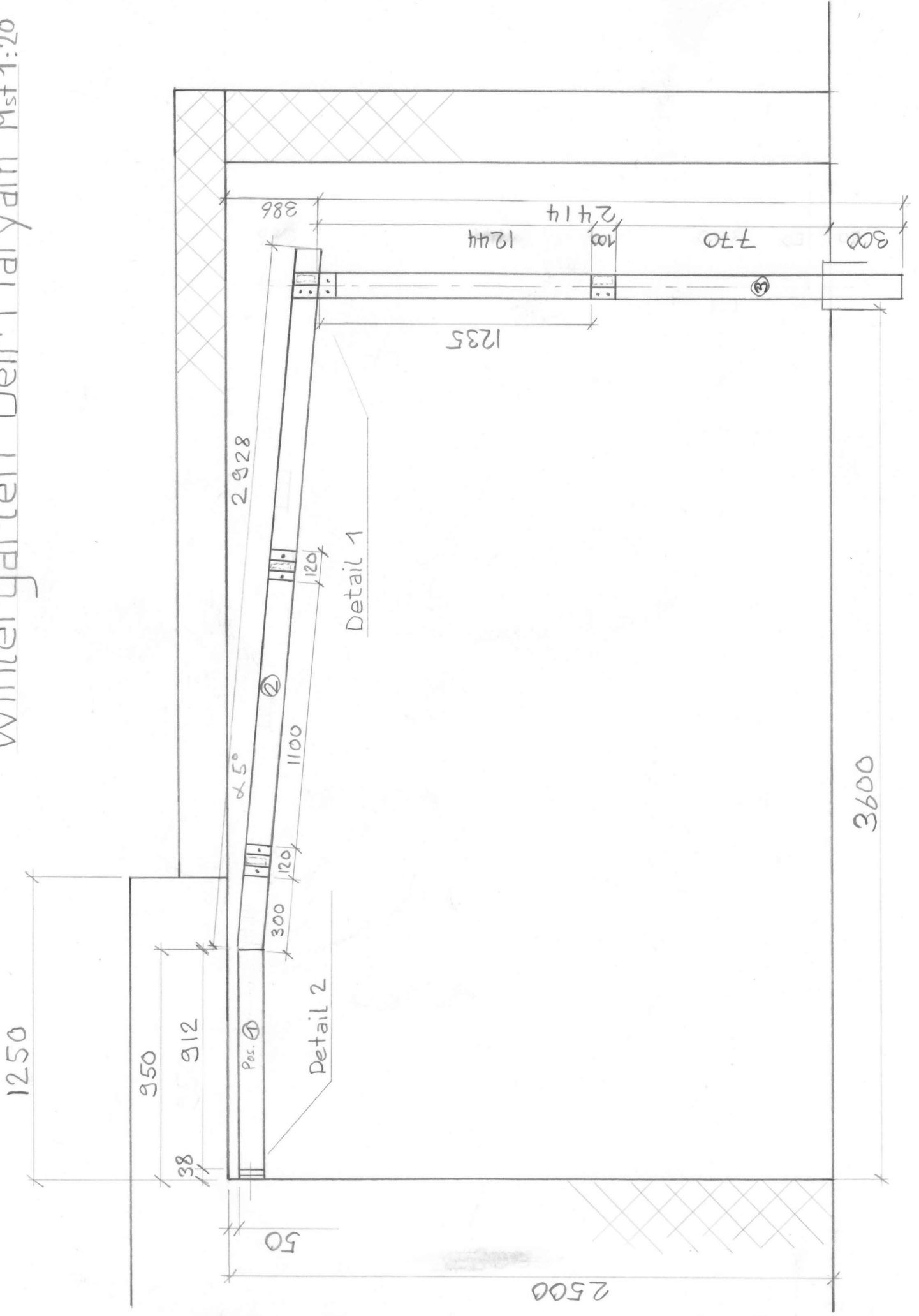
13.10.2014 A.K.

Mst 1:40

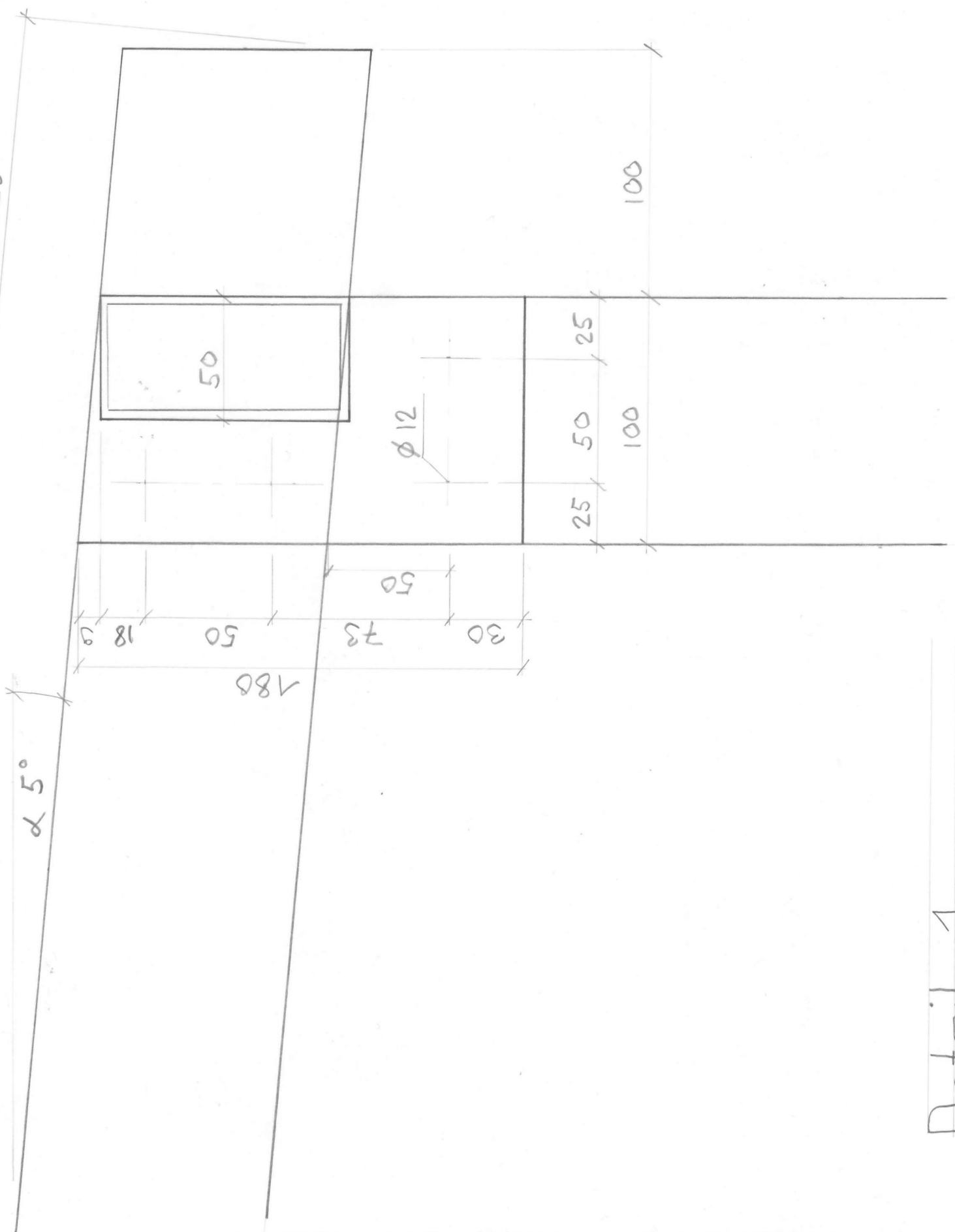
10 250



# Wintergarten Deir Maryam Mst 1:20

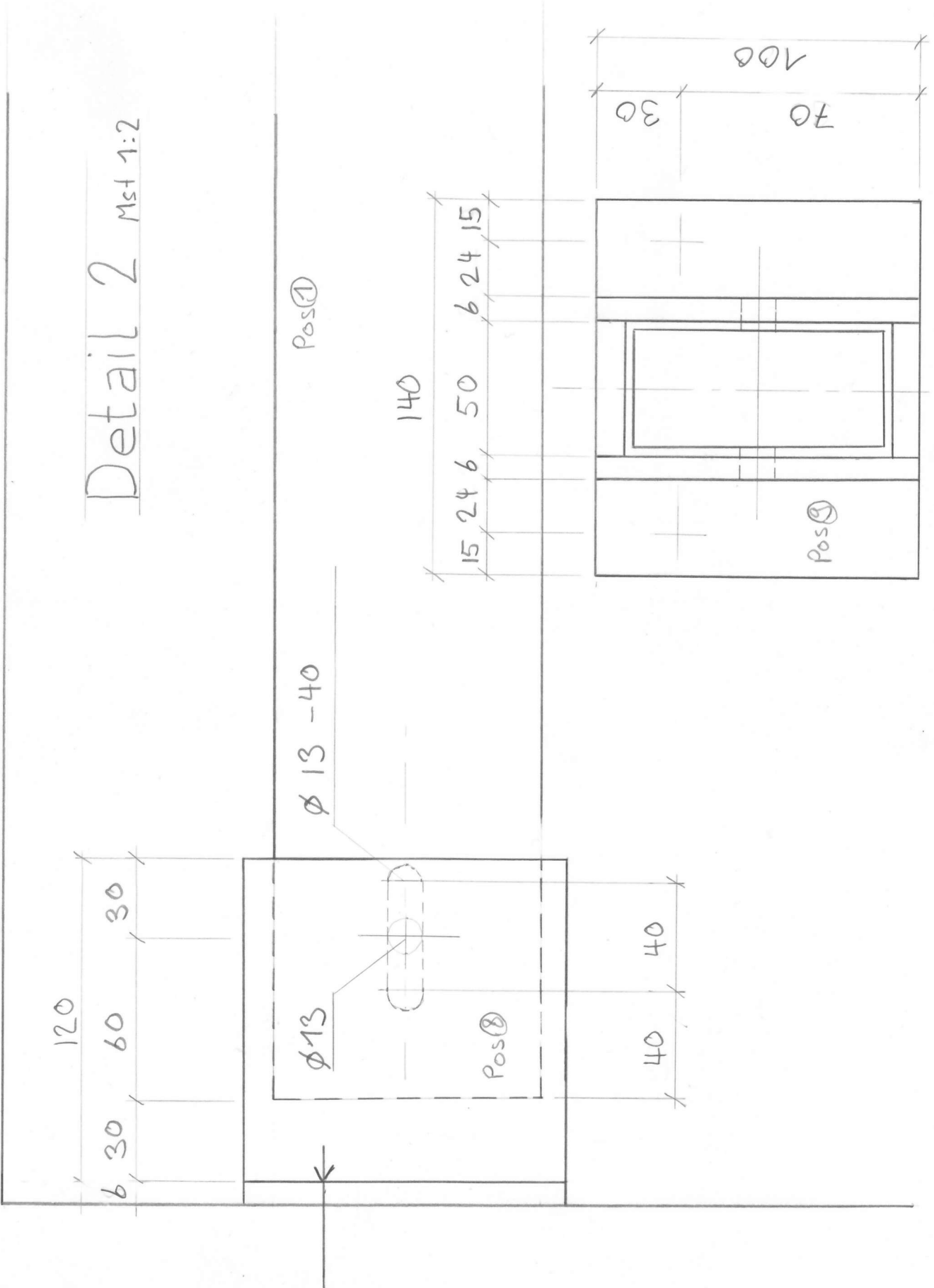


2928



Detail 1 Mst 1:2

# Detail 2 Mst 1:2



# Stückliste

## Shelter Deir Maryam

Pos.	Menge	Bezeichnung	Mass (mm)	Länge (mm)	Winkel	Total (m)	Gewicht (kg)	Preis Iraqi Dinar
1	✓ 5	4-Kant-Rohr	100/50/2	912	90°	4.56	21	
2	✓ 5	4-Kant-Rohr	100/50/2	2928	85°/85°	14.64	66	
3	✓ 5	4-Kant-Rohr	100/50/2	2414	85°/90°	12.07	54	
4	✓ 16	4-Kant-Rohr	100/50/2	2238	90°	35.808	161	
5	✓ 2	4-Kant-Rohr	100/50/2	794	90°	1.588	7	
6	✓ 1	4-Kant-Rohr	100/50/2	1100	90°	1.1	5	
					<b>Total</b>	<b>69.766</b>	<b>314</b>	13 Stangen á 28'000 <b>364'000</b>
6	✓ 27	Flachstahl	100/6	120		3.24	15	
7	✓ 9	Flachstahl	100/6	180		1.62	8	
8	✓ 10	Flachstahl	100/6	120		1.2	6	
9	✓ 5	Flachstahl	100/6	140		0.7	3	
						<b>6.76</b>	<b>32</b>	0.7m2 <b>60'000</b>
10	11	Sandwich Panel	1000/50	3000		33		33m2 á 22\$ 726 \$ <b>871'000</b>
11	10	Anker	12/100					<b>15'000</b>
12	5	Maschinenschraube	12/80					
13	98	Maschinenschraube	10/80					<b>20'000</b>
14	100	Dichtschrauben	6/80					<b>13'000</b>
15	5	Schaum						<b>25'000</b>
							<b>Total ID</b>	<b>1'368'000</b>
							<b>Total \$</b>	<b>1140</b>